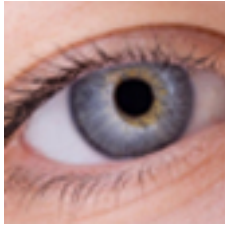


SEE ABILITY

Extraordinary every day



Opening Eyes Training

Date -

Who did you train? -

Trainers -

How many people came to the training?

How many people had learning disabilities?

How many people were supporters?

How long did the training last?

What parts of the training did you deliver?

Empty rounded rectangular box for writing the answer to the question above.

What did you think about the training you did?



Very Good



OK



Bad

What went well?

Large empty rounded rectangular box for writing the answer to the question above.

What did not go well?



What would you change?



Anything else you would like to say about the training?

